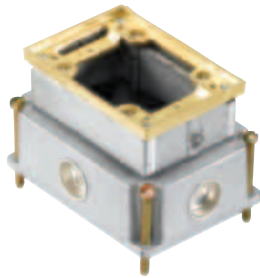
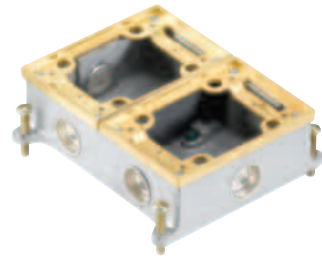


Square Flush Floor Boxes

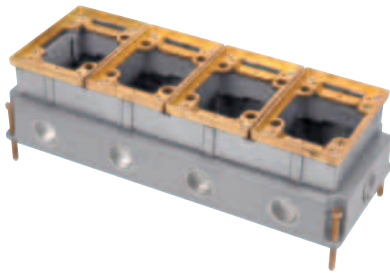
Steel City®



641



842 SC



644



740 SERIES
Steel floor boxes



Cat. No.	Description	Features	Conduit Tapping	Size (in.)		
				Height	Width	Length
641	Single gang floor box	Cast iron fully adjustable - brass trim	3/4	3-5/8	4	5-1/2
641 1			1		7	
642 1	10					
643	Two gang floor box		Cast iron semi adjustable - shallow type	3/4	4-1/2	
644	Four gang floor box	2			4	
841 SC	Single gang floor box		Cast iron fully adjustable - aluminum trim	3/4	7	
841 AL						
842 AL SC	Two gang floor box	Cast iron semi adjustable - shallow type	3/4	2	10	
842 SC						
843 SC	Three gang floor box	Steel	(4) 3/4 KO	2-5/8	5-1/2	4
741S	Shallow one gang floor box		(8) 3/4 KO			7-1/4
742S	Shallow two gang floor box		(12) 3/4 KO			10-1/4
743S	Shallow three gang floor box		(4) 3/4 KO			4
741D	Deep one gang floor box		(8) 3/4 KO			7-1/4
742D	Deep two gang floor box		(12) 3/4 KO			10-1/4
743D	Deep three gang floor box					