

Nonmetallic Round Floor Boxes

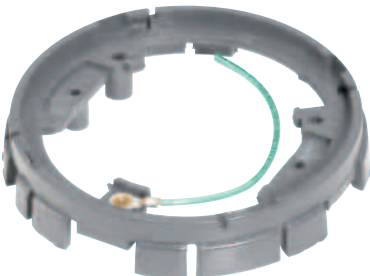
Steel City®



68 P



P 60 CACP



68-PAR



68PFL

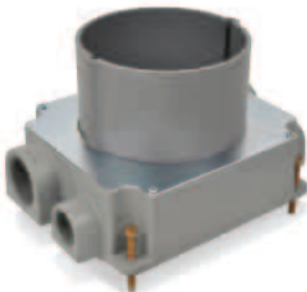
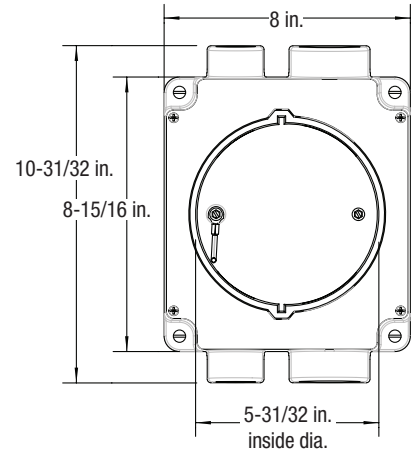
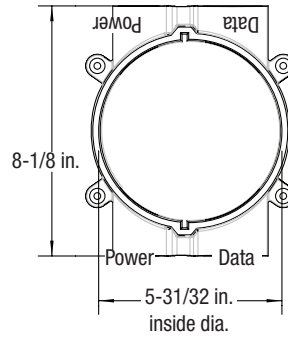


Cat. No.	Description	Features	Size (in.)		
			Height	Width	Length
68 P	Floor box	Rigid PVC c/w cap and 6 hub plugs	6	5-5/32	6-3/8
68-PAR	Adjusting ring	—			
68PFL	Metallic trim ring	Brass			
68PFLAL		Aluminum			
P 68 DRC BGE	Carpet Plate	Duplex plate - beige			
P 68 DRC BRN		Duplex plate - brown			
P 68 DRC GRY		Duplex plate - grey			
P 60 CACP	Brass Carpet Plate	Duplex			



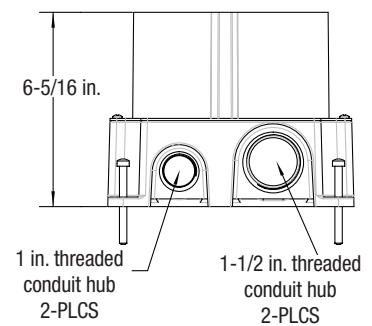
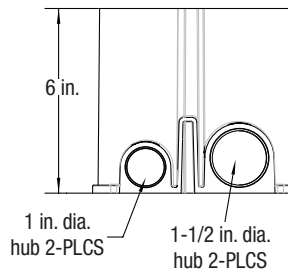
68-HP

6 in. round nonmetallic floor box



68-HP-CI

Cast iron floor box with 6 in. round nonmetallic collar



Cat. No.	Description	Minimum Concrete Depth (in.)		Std. Ctn.
		Flush	Furniture Feed	
68-HP FLOOR BOXES				
68-HP	6 in. round nonmetallic floor box	4	3-1/2	4
68-HP-CI	Cast iron floor box with 6 in. round nonmetallic collar	4-1/2	4	1

Nonmetallic Round Floor Boxes

Steel City®



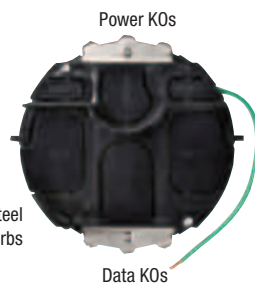
68-HP-FC-BRS



68-HP-FC-ALM



68-HP-FC-BLK



Kit includes:

- Mounting frame
- Voltage divider
- (3) Device plates
 - (1) Center plate: GFCI/rectangular
 - (2) Side plates: rectangular
 - (3) Duplex inserts

Optional Accessories
Device Plates



68-HP-DPC-GFCI



68-HP-DPS-DEC



68-HP-DPC-R



68-HP-DPS-2MAAP

Regular Inserts



68-HP-BI



68-HP-DI

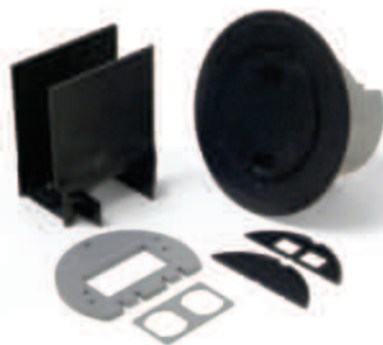
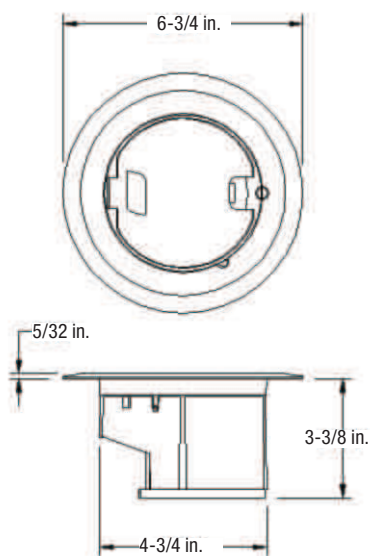


Cat. No.	Description	Std. Ctn.
FLUSH COVERS FOR 68-HP SERIES		
68-HP-FC-ALM	Flush cover — Solid aluminum with brushed finish, 1,000 lb. load rating	4
68-HP-FC-BRS	Flush cover — Solid brass with brushed finish, 1,500 lb. load rating	
68-HP-FC-BLK	Flush cover — Solid aluminum with black powder-coated finish, 1,000 lb. load raging	
FLUSH MOUNTING KITS FOR 68-HP SERIES AND ACCESSORIES		
68-HP-FMK	Mounting kit for flush covers	4
68-HP-DPC-GFCI	Center device plate – GFCI/rectangular receptacle	10
68-HP-DPS-DEC	Side device plate – Rectangular receptacle	
68-HP-DPC-R	Center device plate – Single round receptacle, 1-5/8 in. opening	
68-HP-DPS-2MAAP	Side device plate – 2 Extron® MAAP plates*	
68-HP-BI	Rectangular insert – Blank (for unused compartments)	
68-HP-DI	Rectanqular insert – Duplex receptacle	

*MAAP Plates purchased from an authorized Extron® distributor. Extron® is a registered trademark of RGB Systems, Incorporated

** Additional rectangular adapters available for low voltage applications

68R-CST-BLK



Cover kit includes:

- Cover assembly
- Receptacle mounting plate
- Duplex receptacle insert
- 2-port keystone data plate
- Blank data plate
- Voltage divider



For concrete applications, use a Steel City® round PVC floor box (Catalogue number 68 P)



For wood sub-floor or raised floor applications, use an appropriate Iberville® 3 in. x 2 in. metal switch box with mounting ears



Cat. No.	Description	Features
68R-CST-BLK	Floor box cover kit, black	Nonmetallic recessed
68R-CST-GRY	Floor box cover kit, grey	
68R-CST-BGE	Floor box cover kit, beige	
68R-CST-BRN	Floor box cover kit, brown	
68R-CST-BRS	Floor box cover kit, black with brass flange	
68R-CST-ALM	Floor box cover kit, black with aluminum flange	
68 P	Round PVC floor box	For concrete applications

Important Application Note:

When using the 68R recessed cover with the 68 P floor box for concrete applications, the entire box depth (6 in.) is required. Prior to concrete pour, level the top of the box with the screed line of the concrete.

Use any appropriate CSA Listed Iberville® 3 in. x 2 in. metal switch box with mounting ears when using 68R covers for wood sub-floor/raised floor applications.
Example: 1104L-CRT or 1104LRB-CRT.