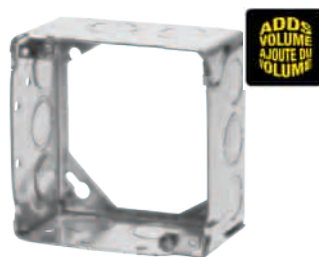




55151K-CRT



OBEX-CRT



53171K-RT



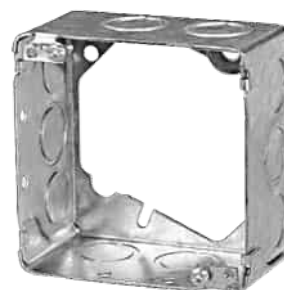
73171K-RT



1110R-RT



2020R-RT



CI53171-ER



| Cat. No.   | Cubic Capacity | Depth (in.) | Ground Screws | Conduit Knockouts   | Description   |
|--|----------------|-------------|---------------|---------------------|---|
| 4 IN. OCTAGONAL BOX – EXTENSION RINGS            |                |             |               |                     |   |
| 55151K-CRT                                       | 15.0           | 1-1/2       | 1             | 2 x K + 2 x 1/2 in. | Non-adjustable depth of 1-1/2 in.   |
| CI55171-K  | 21.0           | 2-1/8       | 1             |                     | Non-adjustable depth of 2-1/8 in.   |
| 4 IN. ROUND BOX – EXTENSION RING                 |                |             |               |                     |   |
| OBEX-CRT   | 5.0            | 1/2         |               |                     | Non-adjustable depth of 1/2 in. Complete with mounting screws.                  |
| 4 IN. SQUARE BOX – EXTENSION RINGS               |                |             |               |                     |   |
| 53151K-RT  | 21.0           | 1-1/2       |               | 6 x K + 4 x 1/2 in. | Non-adjustable depth of 1-1/2 in.   |
| 53171K-RT  | 30.0           | 2-1/8       |               |                     | Non-adjustable depth of 2-1/8 in.   |
| 4-11/16 IN. SQUARE BOX – EXTENSION RINGS         |                |             |               |                     |   |
| BC73151-K  | 30.0           | 1-1/2       |               | 6 x K + 4 x 1/2 in. | Non-adjustable depth of 1-1/2 in.   |
| 73171K-RT  | 42.0           | 2-1/8       |               |                     | Non-adjustable depth of 2-1/8 in.   |
| UTILITY BOX - 4 IN. X 2-3/8 IN. – EXTENSION RING |                |             |               |                     |   |
| 1110R-RT   | 16.5           | 1-7/8       |               | 8 x 1/2 in.         | Non-adjustable depth of 1-7/8 in.   |
| UTILITY BOX - 4 IN. X 2-1/8 IN. – EXTENSION RING |                |             |               |                     |   |
| 2020R-RT   | 14.0           | 1-7/8       |               | 8 x 1/2 in.         | Can be used on 2018 and 2020 series of boxes, non-adjustable depth or 2-1/8 in. |
| EXTENSION RING FOR CONCRETE                      |                |             |               |                     |   |
| CI53171-ER                                       | 30.0           | 2-1/8       |               | 6 x K + 4 x 1/2 in. | Non-adjustable depth of 2-1/8 in.   |