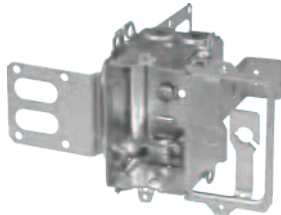
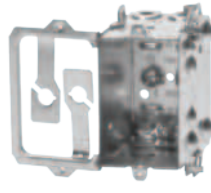




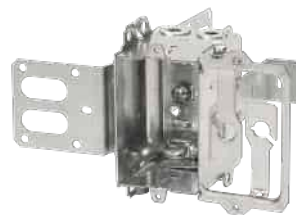
4104L-CRT



CI4304-LSSX



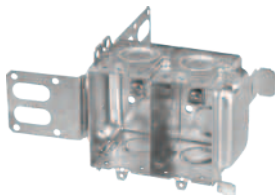
CI4104-LA



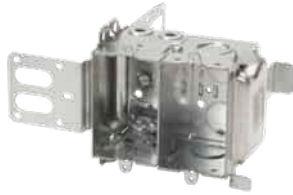
CI4304-LSSAX



CSC300PR



CI4204-KSSX



CI4204-LSSAX



CIMB-0



CIMB-1



CICSB-1



WBF-1-CP



Cat. No.	Features				Conduit Knockouts		Packaging
	Cubic Capacity	Usage	Bracket (See page A3)	Ground Screw (Qty.)	Ends	Bottom	
2-1/2 IN. DEEP X 3 IN. HIGH X 2 IN. WIDE							
4104L-CRT	12.5	L / LA		2	4 pryouts		
CI4304-LSSX			SSX				
CI4104-LA							
CI4304-LSSAX			SSX				
CSC300PR *	3 gang power/communication recessed plate for rework or new work						
2-1/2 IN. DEEP X 3 IN. HIGH X 4 IN. WIDE							
CI4204-KSSX	25.0	K	SSX	2	4 X K	4 X 1/2 in.	
CI4204-LSSX		L / LA		3	2 X K – 4 pryouts	2 X 1/2 in.	
CI4204-LSSAX							
LOW VOLTAGE MOUNTING BRACKETS - CSA NOT APPLICABLE							
CIMB-0	Mounting bracket for low voltage class 2 communication outlets.						
CIMB-1	Mounting bracket for low voltage class 2 communication outlets. Raised 1/2 in.						
CICSB-1	Mounting bracket for low voltage communication outlets.						
WBF-1-CP	Low voltage wall bracket for class 2 communication outlets.						Bag of 2 units

\*Not CSA certified

Note: The power/communications boxes consist of a 2-1/2 in. deep device with a 90 degree folded side incorporating mounting holes for communication outlets and wire holders. The 4104 series is intended for installation on wood studs, while the 4304 series is intended for installation on 2-1/2 in. or 3-5/8 in. steel studs.

The installation is completed with a standard 2 gang wall plate.

The 4204 series is intended for commercial or industrial installations on 2-1/2 in. or 3-5/8 in. steel studs and consists of a 2-1/2 in. deep box (with or without cable clamps), pre-ganged with a concentric knockout box for communication and power outlet separated by a steel partition. The installation is completed with a standard 2 gang wall plate. C.E.C. 2012 edition, rule 12-3030. A partition must be used when conductors, in a multi-gang box, are connected to different sources of voltage.



LVBRNW-1



LVBRNW-2-RT



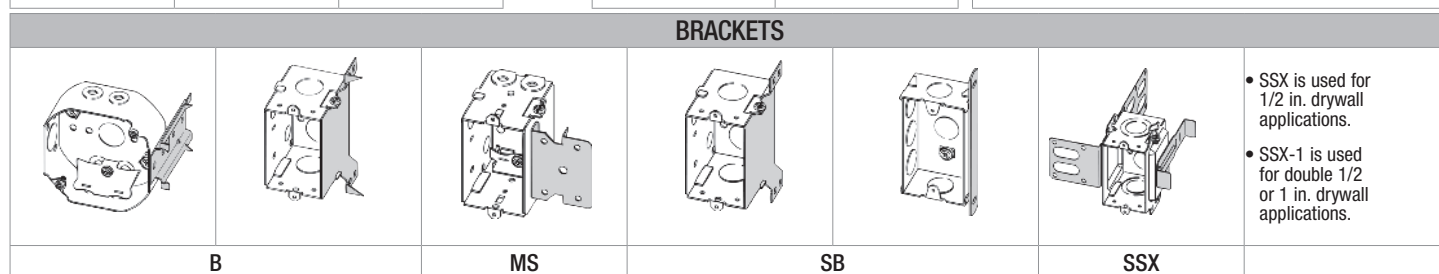
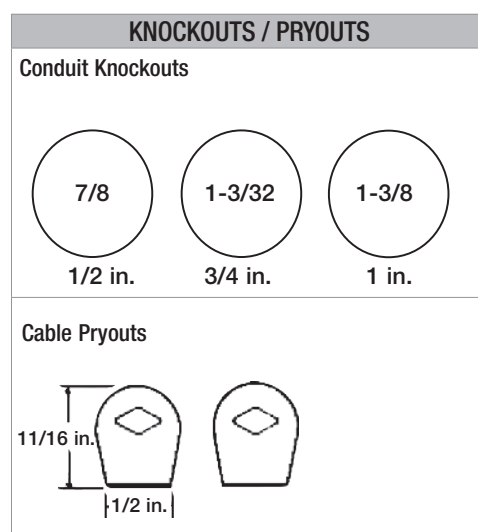
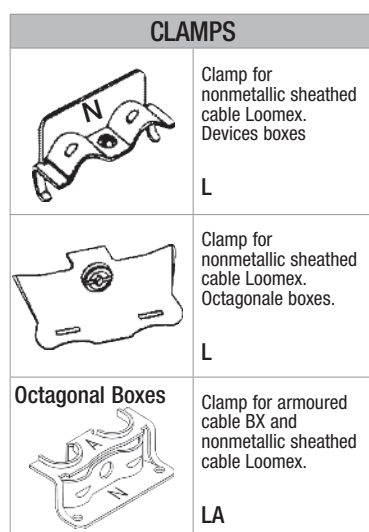
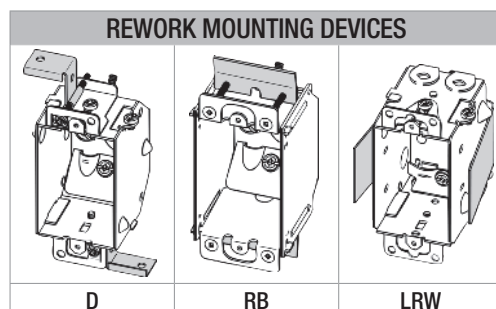
LVBRRW-1



LVBRRW-2



Cat. No.	Description
LOW VOLTAGE PLASTIC BRACKETS	
LVBRNW-1	1 gang low voltage mounting bracket for new work.
LVBRNW-2-RT	2 gang low voltage mounting bracket for new work.
LVBRRW-1	1 gang low voltage mounting bracket for rework.
LVBRRW-2	2 gang low voltage mounting bracket for rework.



\*C.E.C. 2012 Rule 12-3010 (2). Where ganged sectional boxes are used, they shall be secured to metal supports or to wooden boards at least 19 mm thick that are rigidly secured to the structural units.

Maximum Number of Conductors ** (with 0 or 1 wire connector)					
Cubic Inch Capacity * (mm)	Box Series No.	14 AWG	12 AWG	10 AWG	8 AWG
5 (81)	56111, OBEX	3	2	2	-
8 (131)	1100	5	4	3	2
10 (163)	425, 775, 1102	6	5	4	3
11 (180)	777	7	6	4	4
12 (197)	3102	8	6	5	4
12.5 (204/gang)	525, 1104, 2104, 4104, 4204, 4304	8	7	5	4
13 (213)	1141, 2018	8	7	5	4
14 (229/gang)	2020	9	8	6	5
14.5 (237)	1304, 2304	9	8	6	5
15 (245)	1004, 1504, 54151, 55151	10	8	6	5
16 (262/gang)	1004-LB, 1204, 3104	10	9	7	5
16.5 (270)	1110	11	9	7	6
18 (295)	1018, 1804, 3004, 54521	12	10	8	6
18.5 (303)	1151, 1199, 2004	12	10	8	6
21 (344/gang)	52151, 53151, 54171, MBD	14	12	9	7
24 (393)	54531	16	13	10	8
25 (410)	2104 (2 gangs)	16	14	11	9
27 (442)	2304 (2 gangs)	18	15	12	9
30 (491)	52171, 53171, 72151, 73151	20	17	13	10
33 (540)	2-WSW, 2-FWSW	22	18	14	12
36 (590)	54551	24	20	16	13
37.5 (614)	2104 (3 gangs)	25	21	16	13
39.5 (647)	2304 (3 gangs)	26	21	17	17
42 (688)	54561, 72171, 73171	28	24	18	15
50 (819)	2104 (4 gangs)	33	28	22	18
52 (853)	2304 (4 gangs)	34	29	23	18

The Canadian Electrical Code specifies that the maximum number of conductors to be contained in a box is determined by the following factors:

- The total volume of the box assembly (box, extension, raised cover).
- The size (AWG) of the insulated conductors.
- The presence and thickness of flush devices mounted on a single strap.
- The number of wire connectors in the box.

\* When a single strap device is more than 1 in. thick, reduce box capacity by: 5 cu. in. x thickness of device.

\*\* The maximum number of conductors shown in the table must be reduced in each of the following cases:

- One conductor, if the box contains one or more fixture studs or hickey.
- One conductor for every additional pair of wire connectors. (1 conductor for 2 or 3 wire connectors, 2 conductors for 4 or 5 wire connectors...).
- Two conductors for each single strap flush device up to 1 inch thick.
- 1 cu. in. = 16.4 milliliters = 16.4 cubic centimeters

Space for conductors in boxes		
Size of Conductors (AWG)	Usable space required for each Insulated Conductor (cu. in.) (cu. cm.)	
14	1.50	24.6
12	1.75	28.7
10	2.25	36.9
8	2.75	45.1
6	4.50	73.7